

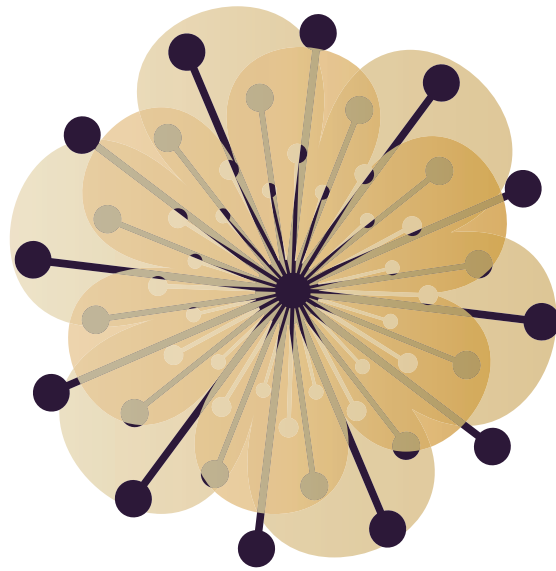
Lodge Living

Peace Hills Lodge
Westpine Lodge



Wetaskiwin
&
Area
Lodge
Authority

wata



ABOUT WETASKIWIN & AREA LODGE AUTHORITY

The Wetaskiwin and Area Lodge Authority (WALA) has overall responsibility for the operation of the seniors' lodges in Wetaskiwin and surrounding area.

The lodges provide housing opportunities for one of the fastest growing segments of our population. Our lodge residents are provided with comfortable accommodations, meal service, laundry options, plus a host of additional services which contribute to an enjoyable standard and quality of life.

It is the responsibility of WALA to assess the adequacy of the facilities that we provide for seniors. To that end, we receive regular survey data regarding the opinions of our residents. We also take the initiative to support new construction and renovations as required.

The Bethany Group is responsible for the management and operations of the lodges while reporting to the Board.

Originally established in 1922 by the Lutheran Church to operate a home for the aged in Bawlf, Alberta, the organization today operates pursuant to the Bethany Nursing Home and Auxiliary Hospitals Act, as well as a Public Housing Management Body pursuant to the Alberta Housing Act. The Bethany Group is driven by the people who work and volunteer for the organization to make the lives of the people they serve better. It also continues to honour its faith-based roots and provide a wholistic approach to caring for its clients.

ABOUT SENIORS LODGES

The mandate of the Seniors Lodge Program is to provide affordable room and board for senior citizens who are functionally independent or functionally independent with the assistance of existing community-based supports.

Lodges offer rooms, meals, services and recreational opportunities. Rates are set by the Housing Management Body - regardless of the monthly lodge rate, each resident must be left with at least \$322 in monthly disposable income.

Each lodge features its own unique community environment, as well as dedicated and friendly staff that help ensure residents enjoy life. From birthday celebrations to holidays, laughter and fun is encouraged.

LODGES MANAGED BY THE BETHANY GROUP

As part of its duties as CAO to several Housing Management Bodies, The Bethany Group manages the following lodges:

- Autumn Grove Lodge, Innsfail (Parkland Foundation)
- Bashaw Meadows, Bashaw (Camrose & Area Lodge Authority)
- Big Knife Lodge, Forestburg (Flagstaff Regional Housing Group)
- Eckville Manor House, Eckville (Lacombe Foundation)
- Lacombe Senior Citizens' Lodge, Lacombe (Lacombe Foundation)
- Peace Hills Lodge, Wetaskiwin (Wetaskiwin & Area Lodge Authority)
- Rosealta Lodge/RAL II, Camrose (Camrose & Area Lodge Authority)
- West Pine Lodge, Winfield (Wetaskiwin & Area Lodge Authority)





LODGES

WEST PINE LODGE



Nestled in the trees, West Pine Lodge in Winfield is a cosy and quaint lodge serving the seniors in the area.

The front entrance features a large fireplace that brings warmth and a homelike feel to the lounge where residents often gather. Activities include local music performances, exercises, and a variety of hobbies, crafts, and events.



PEACE HILLS LODGE

Built in 2010, the new Peace Hills Lodge replaced an older lodge in Wetaskiwin. Now situated in a more natural area, residents of the lodge enjoy the walks and wildlife spotting.

Rooms include barrier free bathrooms and cosy space for a bed and some furniture where residents can return to relax after a day of activities and visiting. Dining rooms are available on both floors of the lodge to create a more intimate dining experience.

FEES

(effective July 1, 2020)

STANDARD STUDIO (Wetaskiwin 73 suites) (Winfield 36 suites)	SINGLE OCCUPANCY (MAX. MONTHLY CHARGE \$2,085)
Accommodaton Fee	30% of line 150 on income tax form to a maximum of \$1200
Lodge Services Package	\$885

STANDARD ONE-BEDROOM (Wetaskiwin 6 suites) (Winfield 1 suite)	SINGLE OCCUPANCY (MAX. MONTHLY CHARGE \$2,285)	COUPLES OCCUPANCY (MAX. MONTHLY CHARGE \$2,785)
Accommodaton Fee	\$1200	30% of line 150 on income tax form to a maximum of \$1200 (combined income)
Lodge Services Package	\$885	\$1385
Options Fee (upgraded suite PHL)	\$200	\$200
Options Fee (upgraded suite WPL)	\$100	\$100

OTHER COSTS & SERVICES (PER MONTH)	PEACE HILLS LODGE	WEST PINE LODGE
Parking (per space; if applicable)	\$10	\$10
Cable TV	Resident to connect directly with outside provider	No charge
Personal Laundry	facilities available at no charge	\$50
Telephone	Resident to connect directly with outside provider	
Internet	Resident to connect directly with outside provider	

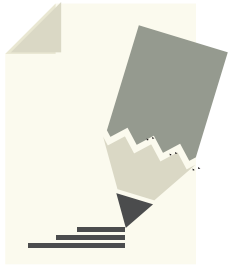
Guest Meals are available for purchase. Please see the facility for more information.



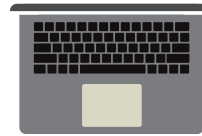


HOW TO APPLY

1. FILL OUT AN APPLICATION



Download from our website



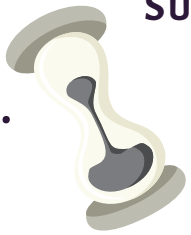
<http://www.wetaskiwinlodges.ca/services#contacts>

Pick one up at a Lodge



See back page for a list of WALA lodges

2.



SUBMIT APPLICATION IN PERSON & INTERVIEW

To ensure that Seniors Self Contained Housing is appropriate for your needs, an interview with the Housing Manager will take place when you bring in your completed application. You will need to book this appointment with the Office.

Your application will not be processed until all documents are submitted. Make sure all documents as listed in the Application Form are brought in with your completed application.



The Bethany Group & WALA must follow the Social Housing Accommodation Regulation (SHAR) to determine how to assign subsidized housing.

For more information on how your application is scored, please see the reverse side of this information sheet.

3.

DECISION IS MADE



Based on your priority of need as determined by the point scoring system, you will either be approved or denied accommodation.

The waitlist is not determined by when you applied but by how much you are in need of accommodation.



If approved, you will be placed on a Waitlist. This waitlist is prioritized by need. How long you wait for the next available room will depend on where you are placed on the waitlist.



If you are not eligible for accommodation, you may wish to discuss this with the Housing Manager. There may be other options or resources for you to access.

POINT SCORING

Priority is decided based on a points system — the higher the points an applicant has, the higher the priority. Points are given for the following criteria.

RISK



- nutritional needs are not being met (e.g., poor eating habits, inability to cook, loneliness)
- degree to which activities or services enhancing spiritual, physical, social, and cultural needs are not being met
- current environment puts individual at risk (e.g., personal safety, forgetfulness)

20

DEGREE OF INDEPENDENCE

20

- ability to manage own personal care and hygiene
- mental well being and applicant's degree to function in congregate living
- degree of applicant's ability to get from one point to another without assistance
- family or community supports available



HOUSING NEEDS

- availability of other accommodation and degree to which no other housing options are available
- current accommodation is not suitable (e.g., not accessible or adaptable)
- current accommodation is not adequate (e.g., dysfunctional shared accommodation, overcrowding)

20

INCOME



- applicant is within the lodge assistance program income threshold
- applicant is eligible for Alberta Seniors Cash Benefit

30

SPECIAL CIRCUMSTANCES

10 points can be awarded at the discretion of the Housing Management Body. For example, the length of time the applicant has lived in the community may be taken into account.

10

100 *maximum total points*

CONTACT US

PEACE HILLS LODGE

100, 4501 - 60 Street
Wetaskiwin, AB T9A 1X7
Tel: 1-780-312-7700

WEST PINE LODGE

5 Avenue & 4 Street
Winfield, AB ToC 2X0
Tel: 1-780-682-3960



Wetaskiwin
&
Area
Lodge
Authority



The Bethany Group
4612 - 53 Street
Camrose AB T4V 1Y6
Tel: 1-780-679-2000

Updated October 2020

THE
BETHANY
GROUP